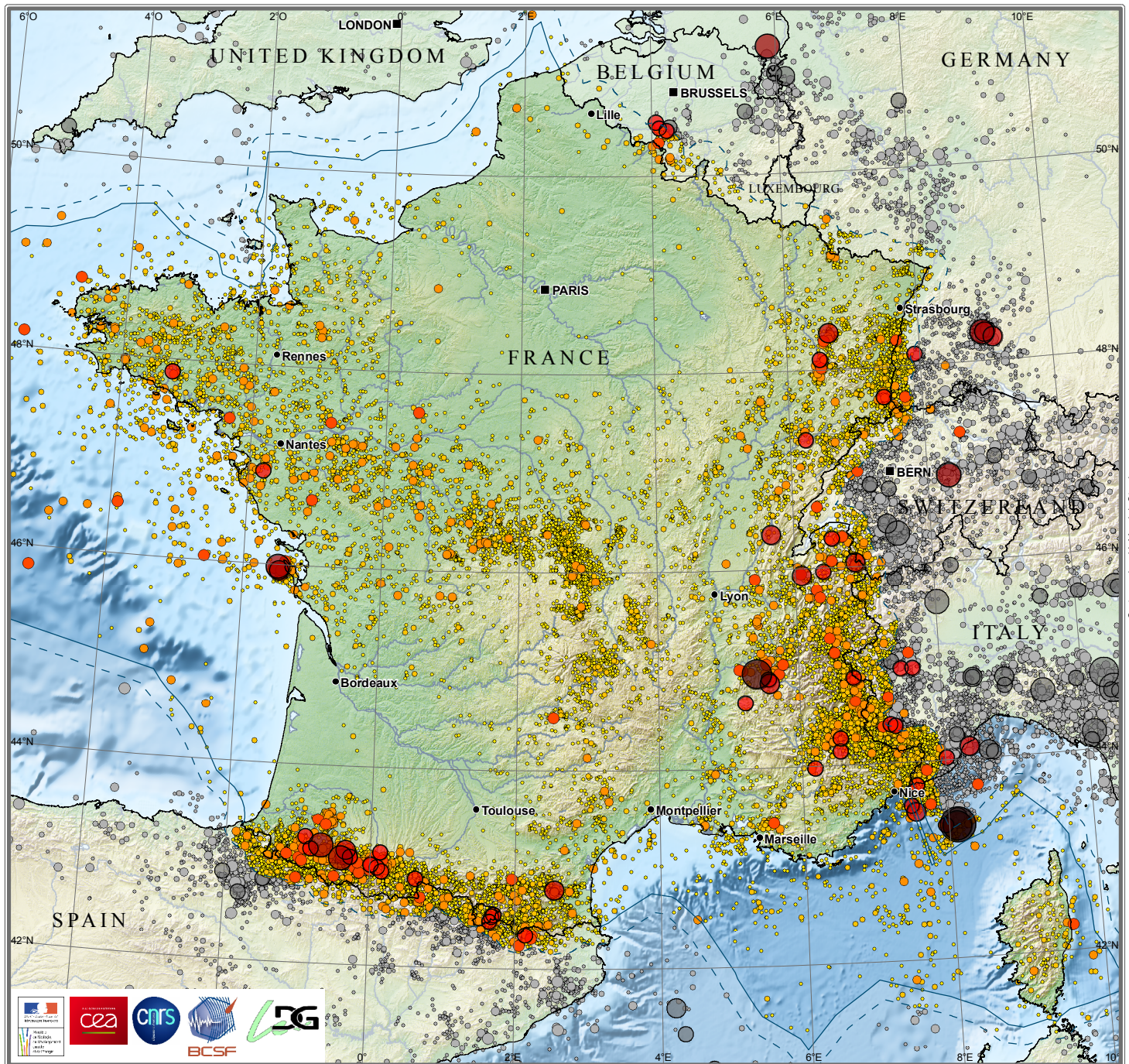


# Instrumental Seismicity of Metropolitan France 1962-2009

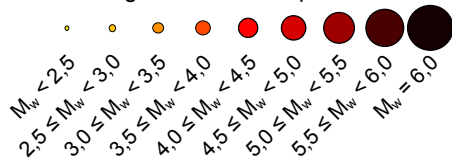


Cartography : V. Mendel, Strasbourg

Realised with the support of Ministère de l'Écologie, du Développement durable et de l'Énergie as well as CNRS for the academic research laboratories participating in the project, and CEA. Conventions n°0007147 and n° 2100474508.

© CNRS - CEA 2014

## Magnitude of earthquakes



*In colour* : epicentres of natural earthquakes within the SI-Hex area (Metropolitan France and the marine Exclusive Economic Zone (EEZ) with an enlargement of 20km), as well as earthquakes felt in France with an EMS-98 intensity  $\geq$  IV (BCSF). *In grey* : epicentres of earthquakes outside SI Hex area for which a  $M_w$  magnitude has been calculated in the frame of the SI-Hex project.

0 50 100 km